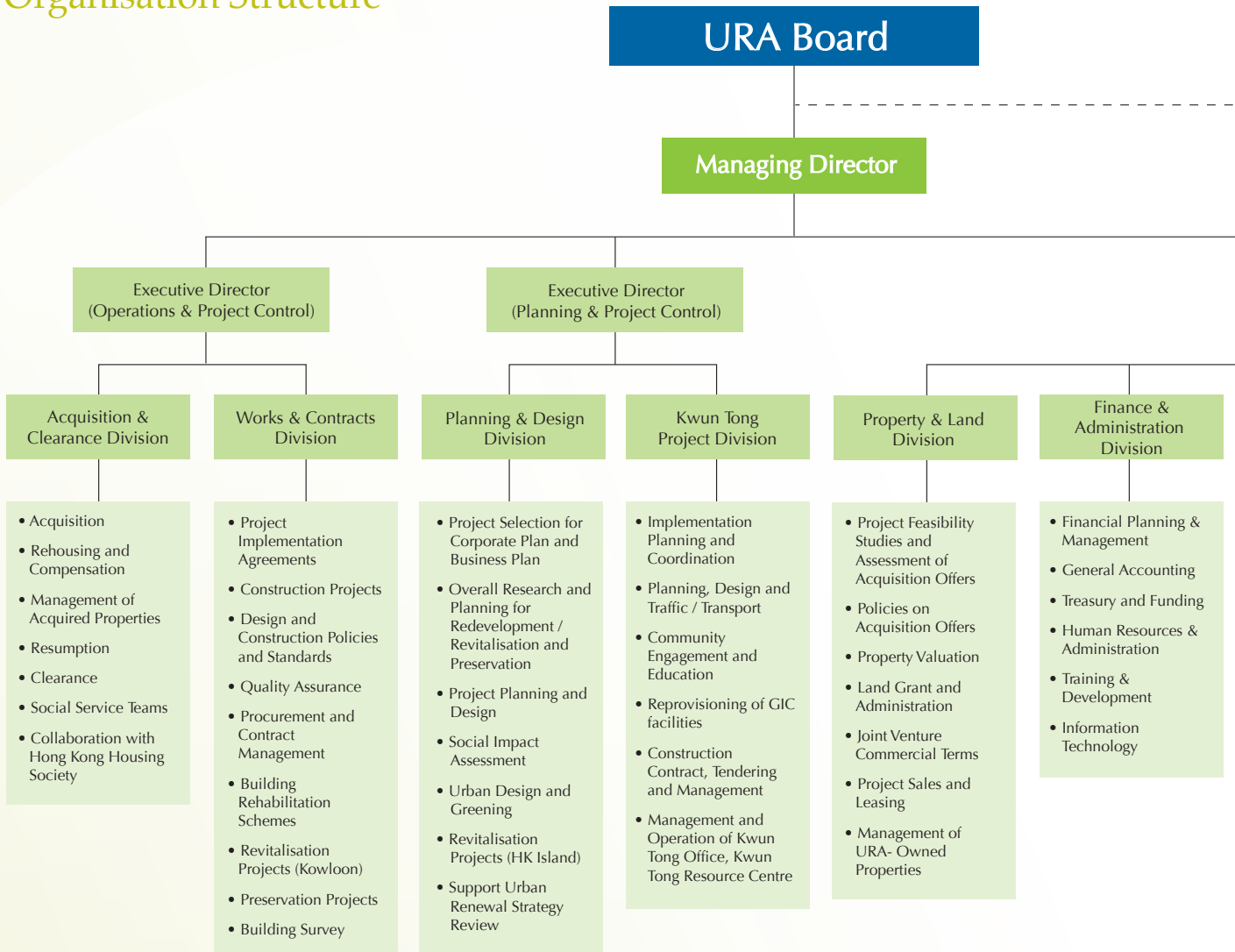


# Organisation Structure



Stephen LAM Wai-nang  
Director, Works and Contracts

Calvin LAM Che-leung  
Executive Director,  
Operations and Project Control

Joseph LEE King-chi  
Director, Acquisition and Clearance

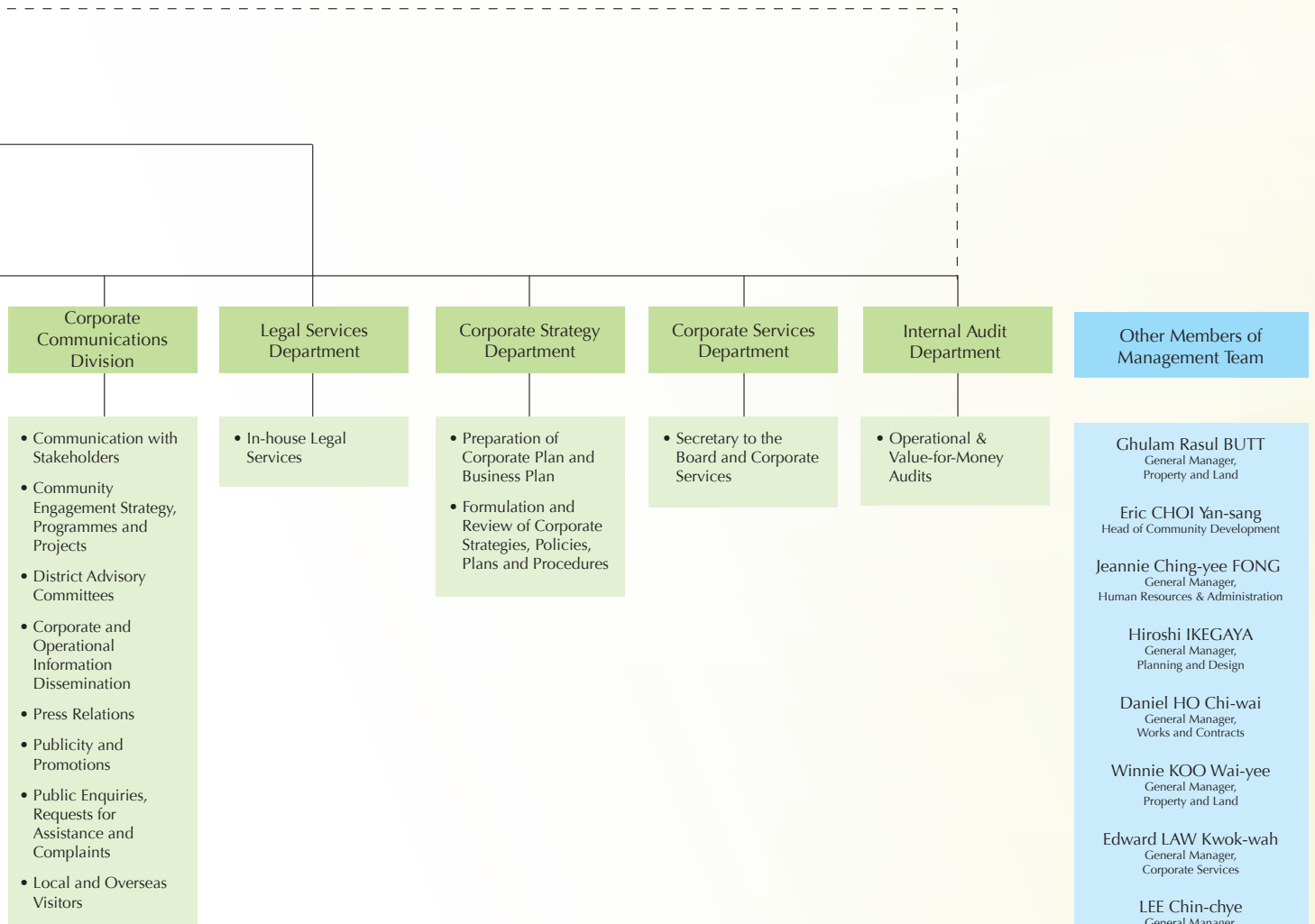


Ernest LEE Shu-wing  
Director, Kwun Tong Project

Michael MA  
Director, Planning and Design

Iris TAM Siu-ying  
Executive Director,  
Planning and Project Control

# Organisation Structure



Quinn LAW Yee-kwan  
Managing Director

William WAN Shiu-wah  
Director, Property and Land

Felicia WAI Sik-yin  
Director, Finance and Administration

Lawrence YAU Chung-hok  
Director, Corporate Communications

Pius CHENG Kai-wah  
Director, Legal Services

- Ghulam Rasul BUTT  
General Manager,  
Property and Land
- Eric CHOI Yan-sang  
Head of Community Development
- Jeannie Ching-yee FONG  
General Manager,  
Human Resources & Administration
- Hiroshi IKEGAYA  
General Manager,  
Planning and Design
- Daniel HO Chi-wai  
General Manager,  
Works and Contracts
- Winnie KOO Wai-yee  
General Manager,  
Property and Land
- Edward LAW Kwok-wah  
General Manager,  
Corporate Services
- LEE Chin-chye  
General Manager,  
Financial Planning and Accounting
- Bruchi NAM Chi-kwong  
General Manager,  
Property and Land
- Ian B I PETERSEN  
Coordinator,  
Corporate Strategy
- Eric POON Shun-wing  
General Manager,  
Works and Contracts
- Lawrence TANG Kwan-lam  
General Manager,  
Works and Contracts
- Roger TANG Man-hung  
General Manager,  
Kwun Tong Project
- Angela TANG Sin-yu  
General Manager,  
External Relations
- Ellen WONG Lai-kuen  
General Manager,  
Acquisition and Clearance
- Ian WONG Wai-kuen  
Head, Acquisition and Clearance
- Francis WONG Iu-ming  
General Manager,  
Internal Audit