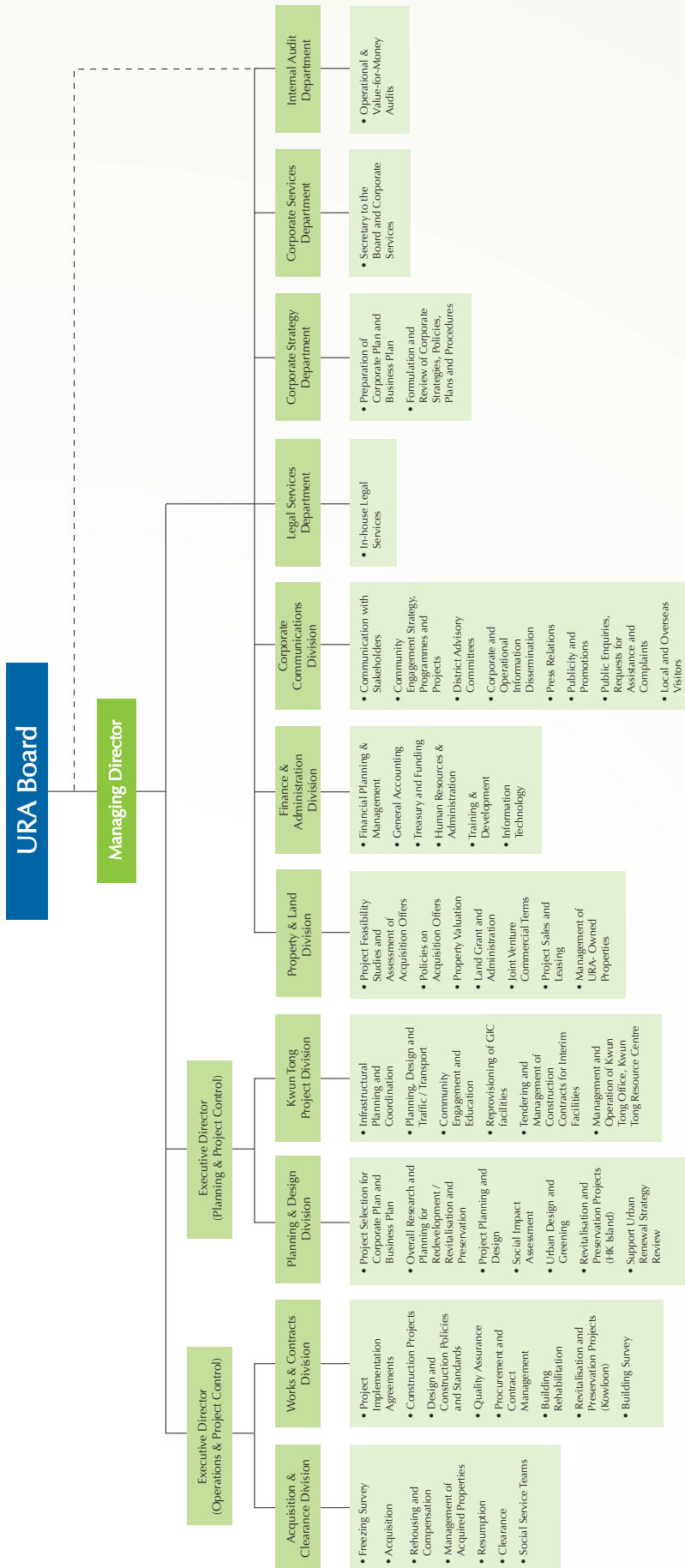


Organisation Structure



Organisation Structure



FROM LEFT

Front row : William WAN Shiu-wah (Director, Property and Land), Felicia WAI Sik-yin (Director, Finance and Administration), Calvin LAM Che-leung (Executive Director, Operations and Project Control), Quinn LAW Yee-kwan (Managing Director), Iris TAM Siu-ying (Executive Director, Planning and Project Control), Joseph LEE King-chi (Director, Acquisition and Clearance)

Back row : Lawrence YAU Chung-hok (Director, Corporate Communications), Michael MA (Director, Planning and Design), Pius CHENG Kai-wah (Director, Legal Services), Ernest LEE Shu-wing (Director, Kwun Tong Project), Stephen LAM Wai-nang (Director, Works and Contracts)

Other Members of Management Team

Ghulam Rasul BUTT General Manager, Planning and Design	Winnie KOO Wai-ye General Manager, Property and Land	Eric POON Shun-wing General Manager, Works and Contracts	Ellen WONG Lai-kuen General Manager, Acquisition and Clearance
Eric CHOI Yan-sang Head of Community Development	Edward LAW Kwok-wah General Manager, Corporate Services	Lawrence TANG Kwan-lam General Manager, Works and Contracts	Ian WONG Wai-kuen Head, Acquisition and Clearance
Jeannie Ching-ye FONG General Manager, Human Resources & Administration	LEE Chin-chye General Manager, Financial Planning and Accounting	Roger TANG Man-hung General Manager, Kwun Tong Project	
Daniel HO Chi-wai General Manager, Works and Contracts	Bruchi NAM Chi-kwong General Manager, Property and Land	Angela TANG Sin-yu General Manager, External Relations	
Hiroshi IKEGAYA General Manager, Planning and Design	Ian B I PETERSEN Coordinator, Corporate Strategy	Francis WONG Iu-ming General Manager, Internal Audit	